

## TECHNICAL DATA SHEET

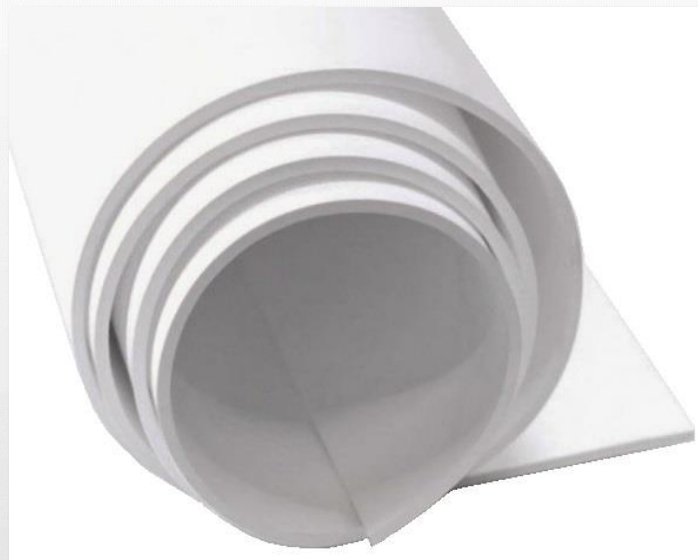
### EXPANDED E-PTFE SHEET

---

Multi-directional expanded sheets are composed of a multidirectional structure of polymer fibres, which gives the sheets their specific properties. Features an extremely low coefficient of compression and a low increase in width even under extreme conditions. Due to the multidirectional structure, E-PTFE sheets exhibit very good material properties at high surface pressures and increasing temperatures. Compared to other materials based on PTFE, E-PTFE shows high dimensional stability for height and width, even under severe operating conditions. The sheet of pure expanded PTFE exhibits high chemical resistance. The material is resistant to ageing, highly flexible and chemically resistant (except for elemental fluorine and molten alkali metals).

#### FEATURES

- Operation temperature from 200°C to + 260°C.
- Excellent abrasion resistance.
- Superior chemical resistance.
- Excellent sliding properties.
- Very low moisture absorption.
- No stick-slip effect.
- Superior resistance to most acids.
- Can be used in contact with foodstuffs.



#### APPLICATION

The sheets are used for sealing flange connections, chemical apparatus, hatches, heat exchangers, for full surface sealing, for LABORATORY APPARATUS sealing of steel, aluminium, ceramic, rubber, plastic and enamelled flanges. Commonly used in industry.

#### AVAILABLE SAIZES

Standard: 1500 x 1500 mm  
Thicknesses: 0,5mm 1mm 1,5mm 2mm  
3mm 4mm 5mm 6mm

*\* This data sheet is confidential. Transmitting, copying and disclosing it to third parties requires the written consent of PRO-HURT. The present data sheet is directed at the addressee(s) referred to above and is the property of the addressee. Disclosure of the card is prohibited. If you are not the intended addressee, you must delete this document immediately and notify the sender by phone or email.*